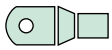
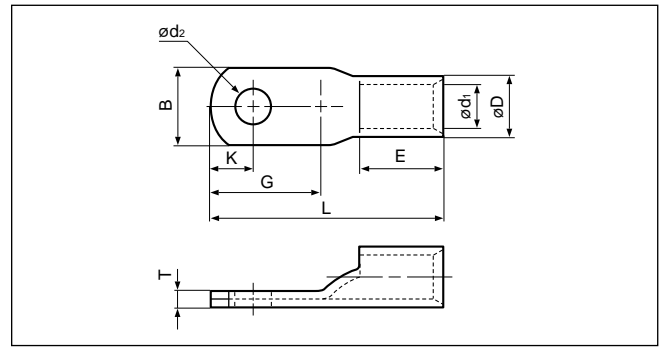
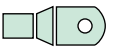


Solderless terminals



COPPER TUBULAR LUGS (One-hole)



Applicable Wire AWG#(mm ²)	Stud size		Part No.	Standard	Dimensions mm (in.)									Tool No.										Qty/box			
	American	Metric			ϕd_2	B	L	E	G	K	ϕD	ϕd_1	T	YHT-2210	YHT-8S	YA-1	YA-2	YA-4	YA-5	YPT-60N	YPT-160-1	YET-60-1	YET-150-2		E-4, YF-1 EP-1	YET-300-1	E-4, YF-1
16 to 14 (1.04 to 2.63)	8	4	TU2-4		4.3 (.169)	7.0 (.276)	20.0 (.787)	7.0 (.276)	9.5 (.374)	4.0(.157)	4.0 (.157)	2.3 (.091)	1.3 (.051)	0	0	0	0										2,000
12 to 10 (2.63 to 6.64)	8	4	TU5.5-4		4.3 (.169)	9.0 (.354)	21.5 (.847)	8.5 (.335)	9.5 (.374)	4.0(.157)	5.5 (.217)	3.4 (.134)	1.7 (.067)	0	0	0	0										1,000
8 (6.64 to 10.52)	8	4	TU8-4		4.3 (.169)	10.0 (.394)	28.5(1.122)	11.0 (.433)	12.5 (.492)	5.8(.228)	7.1 (.280)	4.5 (.177)	2.4 (.095)	0			0	0	0	0	0	0	0	0	0	0	500
	10	5	TU8-5		5.3 (.209)																						
6 (10.52 to 16.78)	10	5	TU14-5		5.3 (.209)	13.0 (.512)	34.0(1.339)	14.0 (.551)	14.5 (.571)	6.5(.256)	9.0 (.354)	5.8 (.228)	3.0 (.118)				0	0	0	0	0	0	0	0	0	0	250
	1/4	6	TU14-6		6.4 (.252)																						
	5/16	8	TU14-8		9.0 (.354)																						
4 (16.78 to 26.66)	10	5	TU22-5		5.3 (.209)	16.0 (.630)	37.5(1.476)	15.0 (.591)	17.0 (.669)	7.0(.276)	11.4 (.449)	7.7 (.303)	3.6 (.142)					0	0	0	0	0	0	0	0	0	200
	1/4	6	TU22-6		6.4 (.252)																						
	5/16	8	TU22L-8		9.0 (.354)		39.5(1.555)		19.0 (.748)	8.5(.335)																	
2 (26.66 to 42.42)	10	5	TU38-5		5.3 (.209)	19.0 (.748)	44.0(1.732)	18.0 (.709)	19.0 (.748)	8.5(.335)	13.3 (.524)	9.4 (.370)	3.8 (.150)					0	0	0	0	0	0	0	0	0	100
	1/4	6	TU38-6		6.4 (.252)																						
	5/16	8	TU38L-8		9.0 (.354)																						
	3/8	10	TU38L-10		11.0 (.433)																						
	1/2	12	TU38L-12		14.0 (.551)																						
1/0 (42.42 to 60.57)	1/4	6	TU60-6		6.4 (.252)	22.0 (.866)	55.5(2.185)	20.0 (.787)	26.0(1.024)	10.5(.413)	15.4 (.606)	11.4 (.449)	4.0 (.157)					0	0	0	0	0	0	0	0	0	50
	5/16	8	TU60-8		9.0 (.354)																						
	3/8	10	TU60-10		11.0 (.433)																						
	3/8	10	TU60L-10		11.0 (.433)																						
	7/16	11	TU60L-11		12.0 (.472)																						
1/2	12	TU60L-12		14.0 (.551)																							
2/0 (60.57 to 76.28)	1/4	6	TU70-6		6.4 (.252)	25.0 (.984)	58.5(2.303)	22.0 (.866)	26.0(1.024)	10.5(.413)	17.5 (.689)	13.3 (.524)	4.3 (.169)					0									50
	5/16	8	TU70-8		9.0 (.354)																						
	3/8	10	TU70L-10		11.0 (.433)		62.0(2.441)		29.5(1.161)	13.5(.532)																	
	1/2	12	TU70L-12		14.0 (.551)																						
3/0 (76.28 to 96.3)	1/4	6	TU80-6		6.4 (.252)	27.5 (1.083)	65.0(2.559)	24.5 (.965)	28.5(1.122)	11.5(.453)	19.4 (.764)	14.5 (.571)	5.1 (.201)						0								25
	5/16	8	TU80-8		9.0 (.354)																						
	3/8	10	TU80-10		11.0 (.433)																						
	3/8	10	TU80L-10		11.0 (.433)																						
	7/16	11	TU80L-11		12.0 (.472)		69.0(2.717)		32.3(1.272)	13.5(.532)																	
1/2	12	TU80L-12		14.0 (.551)																							
4/0 (96.3 to 117.2)	5/16	8	TU100-8		9.0 (.354)	31.5 (1.240)	71.0(2.795)	25.5 (1.004)	31.3(1.232)	14.5(.571)																	
	3/8	10	TU100-10		11.0 (.433)																						
	7/16	11	TU100M-11		12.0 (.472)																						
	7/16	11	TU100L-11		12.0 (.472)		78.5(3.091)		38.8(1.528)		22.0 (.866)	16.4 (.646)	5.7 (.224)						0								
	1/2	12	TU100M-12		14.0 (.551)		75.0(2.953)		35.3(1.390)																		
	1/2	12	TU100L-12		14.0 (.551)		78.5(3.091)		38.8(1.528)																		
	5/8	16	TU100M-16		18.0 (.709)		75.0(2.953)		35.3(1.390)																		
	5/8	16	TU100L-16		18.0 (.709)		78.5(3.091)		38.8(1.528)																		

Note:1) Delivery lead times may vary depending on the product. Contact JST for details.

